



Philip Glanville
Mayor of
Hackney

Dear resident,

Managing a council budget is no simple task, but setting this year's budget has been the toughest in many years.

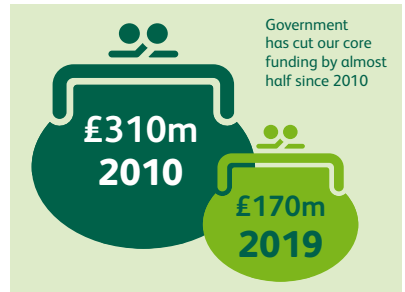
Hackney is a fantastic place to live. We have stunning green spaces, a world-famous cultural offer, a strong community spirit, some of the best schools in the country, and we're working hard to make sure that every resident can access the opportunities created by the growth in our local economy.

I'm proud of the excellent services the Council provides, but it's getting harder and harder to fund them. Hackney has a strong financial track record but seven years of Government cuts are taking their toll on public services, as more and more people are turning to councils for support, with less and less money available to help them.

Per head of population Hackney has seen the biggest core funding cut of any London borough at £512.

We're now in our seventh year of austerity, and people are well used to the idea that public service budgets have been slashed. But for many councils, including Hackney, the impact is only really being felt now. Quite simply, councils are at breaking point.

As well as slashed budgets, welfare reform and the rising cost of housing is driving up demand for services for some of our more vulnerable residents, so it's no surprise that the areas where pressures are felt most acutely in Hackney are children's services, adult social care and temporary accommodation.



Since becoming Mayor in summer 2016, my absolute priority has been to protect our most vulnerable residents and help low earners, who are affected most by the housing crisis, and we will continue to do this.

But we're having to make increasingly difficult choices – whether that's changing how we fund extra support for children with special educational needs to take into account a £5m gap left by Government under-funding, or asking working age adults who qualify for Council Tax Reduction Scheme to pay an extra 2% towards their council tax.

A couple of years ago, we carried out our biggest ever engagement exercise, Hackney A Place For Everyone. Through this consultation and dozens of events, we wanted to find out what your priorities are in this fast-changing borough. You highlighted affordable housing, clean streets, schools, and community events as amongst the things that matter to you most. This feedback is helping us to shape our work across the Council, and how we work with the community and local organisations to deliver your priorities.

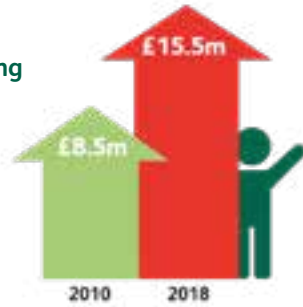
We're also having to think outside the box in order to deliver the facilities you need and deserve. For example, the Britannia project, which will see a new and improved leisure centre to replace the crumbling existing one, and a new secondary school as well as council housing, will be funded by the sale of new homes, which will also be built on the site.

In 2018/19, Hackney's council tax will go up by three per cent. Two per cent is the extra amount the Government is allowing us to raise to go towards the costs of social care for older and disabled people. A further 1% will go towards other Council services, from waste collections and maintaining our parks to funding our libraries and providing temporary accommodation for those who need it most.

Increasing council tax isn't an easy decision; I know the rising cost of living and worsening housing crisis continue to affect



Cost of supporting children in care



us all, but this extra contribution will help to maintain the vital services that people rely on and value. We will keep campaigning and doing all we can to make Hackney's voice heard.

Despite the challenges, Hackney remains a place to be proud of. We're building 1,500 genuinely affordable homes, we have libraries and services for young people that are the envy of London and are investing in services like Hackney Works and our apprenticeship programme, to support residents to take advantage of the opportunities our borough has to offer.

Hackney has a strong track record of attracting investment from outside bodies for innovative projects like our contextual safeguarding programme, which will help to keep children and young people safer and we were recently announced as one of 12 pilot areas to share £100m from Sport England to transform levels of health and exercise in the Kings Park Ward.

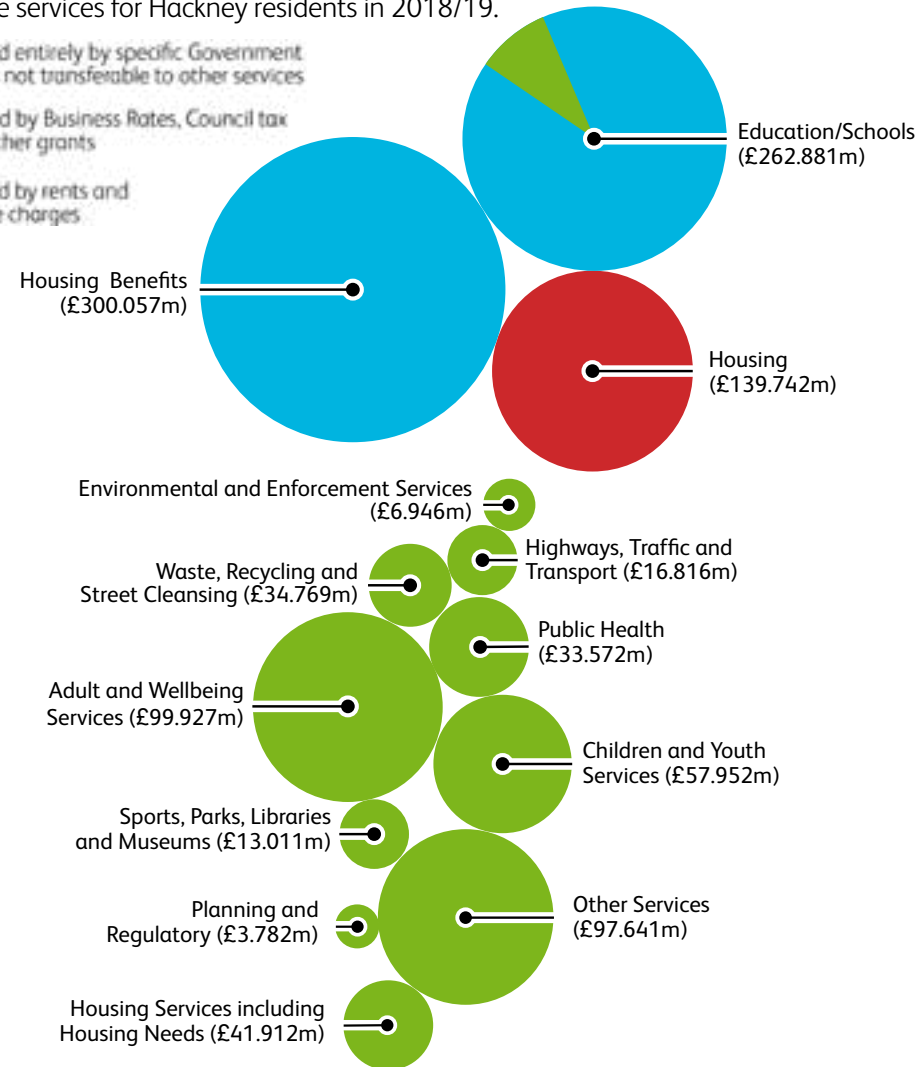
The coming months and years are going to be tough, and the services you use will change. However as your elected mayor, I promise to keep fighting and do everything I can to ensure that Hackney remains a Place for Everyone.

Mayor of Hackney

What the Council spends on services for you

Government funding to Hackney Council has been cut again this financial year. Despite this we will continue to deliver the same level of frontline services for Hackney residents in 2018/19.

- Funded entirely by specific Government grants not transferable to other services
- Funded by Business Rates, Council tax and other grants
- Funded by rents and service charges



Where to find more information

For more information about the Council's budget, the Adult Social Care Precept and what the Council spends on services visit www.hackney.gov.uk/budget or write to: **Council Tax, Hackney Service Centre, 1 Hillman Street, London, E8 1DY**

one account

Access Council services online in one place with One Account.

- Council Tax
- Business rates
- Housing repairs
- Voter registration
- Housing Benefit
- Appointments



Sign up and save time with your tablet, computer or smartphone at:
www.hackney.gov.uk

HD55506

Out of work? On a low income?

You may be entitled to support to help pay your Council Tax through the Council Tax Reduction Scheme or the Council Tax Discretionary Fund.

Working age people can receive an award of up to 83% of their Council Tax through the Council Tax Reduction Scheme. This award is means tested and available to those whose income is below an amount set by the Council.

Those who receive support through the Council Tax Reduction Scheme but are unable to pay the remaining 17% of their Council Tax may be able to get extra help through the Council Tax Discretionary Fund – a pot of money to provide short term assistance to those in financial difficulties.

Those who apply for the fund are also able to access advice around debt and money management.